

Hold Open Arm Replacement – Floor Doors

HOLD OPEN ARM REMOVAL

Tools needed for this procedure: $\frac{3}{4}$ " box end wrench, $\frac{3}{4}$ " thin wrench, metal brace, (2) vice grips

- 1) Open the cover of the door.
- 2) Brace door to open position using vice grips and brace as shown below. If the door has a guide arm, this is not necessary. (See Figure 1)



Figure 1

- 3) Remove red vinyl grip from hold open arm by twisting. (Figure 2)

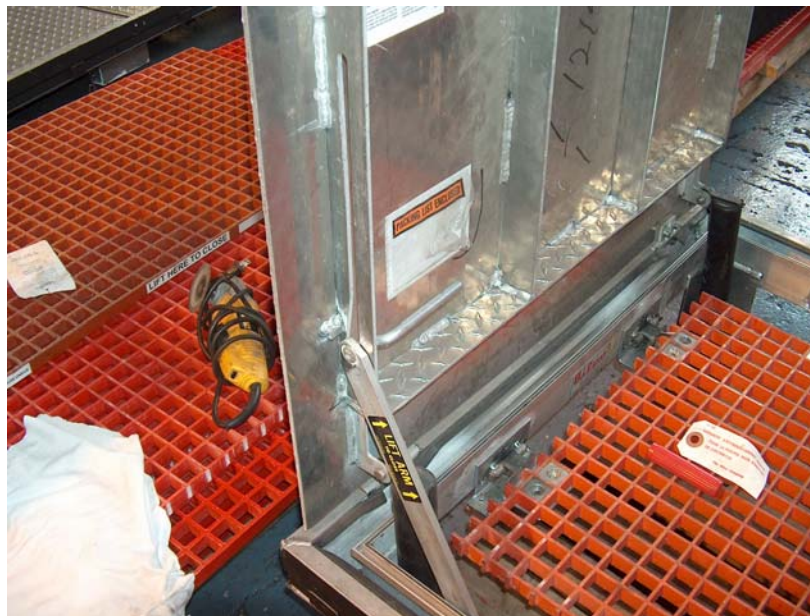


Figure 2

Hold Open Arm Replacement – Floor Doors

- 4) Using a 3/4" box wrench on the outside of the frame and a thin 3/4" wrench in between on the inside, loosen the bolt. (Figure 3)



Figure 3

- 5) Remove the bolt and nut as well as the lift arm itself. (Figure 4)



Figure 4

Hold Open Arm Replacement – Floor Doors

HOLD OPEN ARM INSTALLATION

- 6) Take the lift arm and place it back into position as shown here in Figure 5.



Figure 5

- 7) Take the box wrench and thin wrench and position them as they were before, tightening the bolt to the frame.
- 8) Put the red vinyl grip back on the arm with a twisting motion.

Hold Open Arm Replacement – Floor Doors

