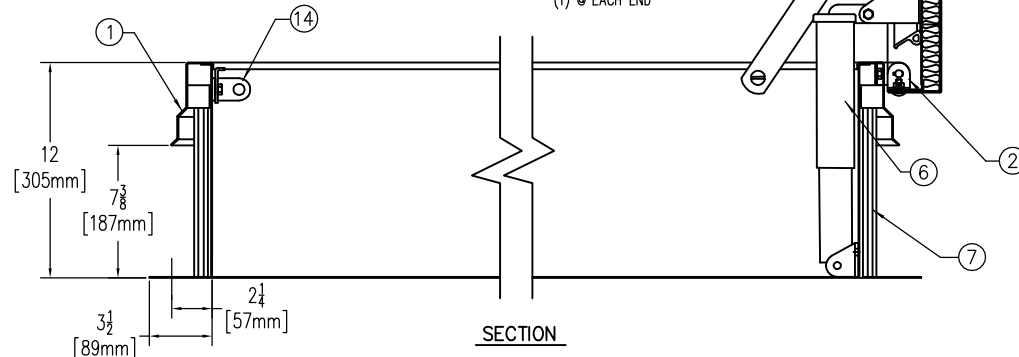
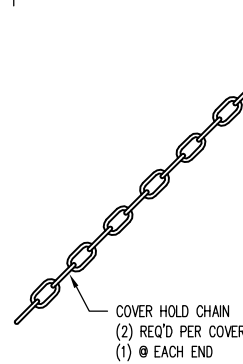
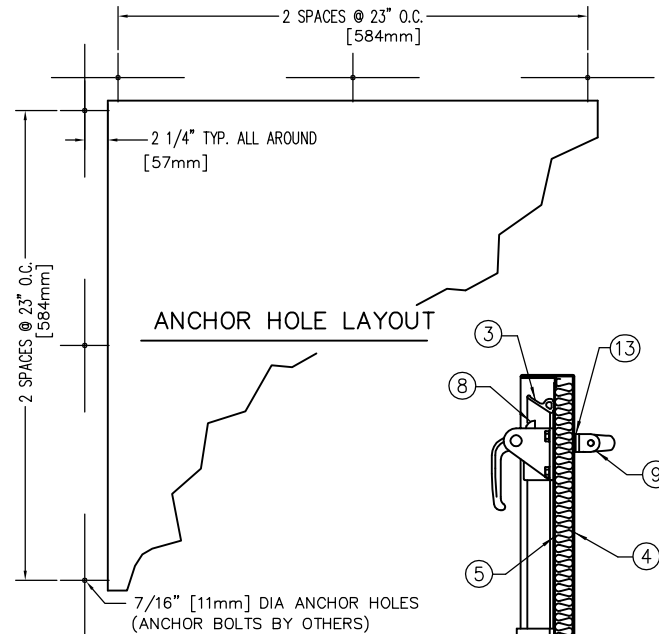
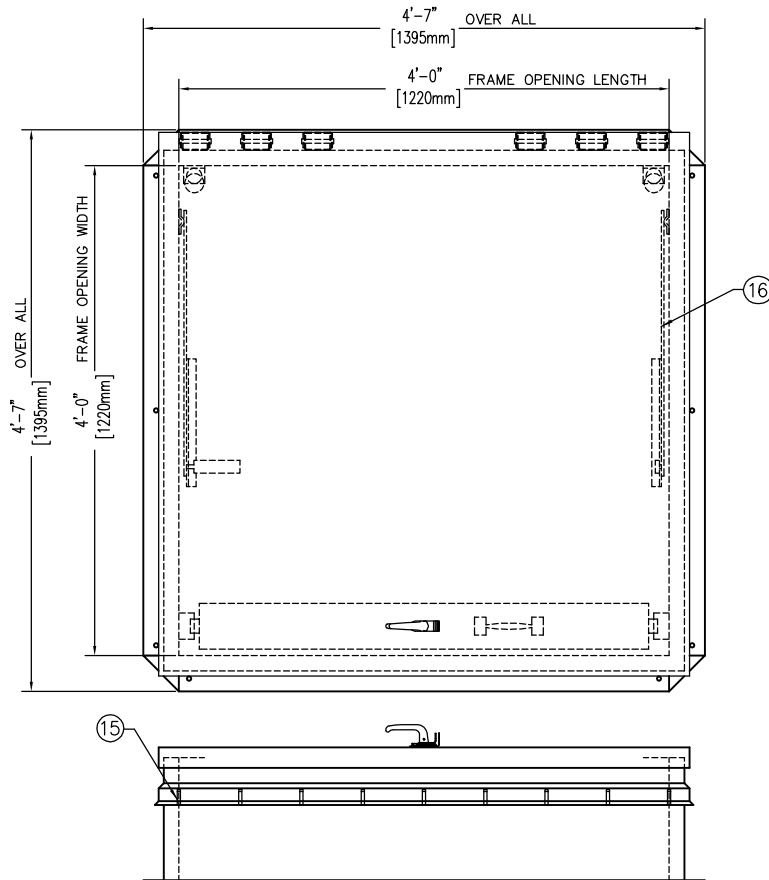


MIAMI-DADE PRODUCT APPROVED (NOA NO. 23-0815.19)  
MEETING LARGE AND SMALL MISSILE IMPACT REQUIREMENTS  
FLORIDA PRODUCT APPROVAL #FL15110-R6



## SPECIFICATIONS

- FRAME W/ CAPFLASHING (CORNERS FULL WELDED)  
F-20HZ - 14 GAUGE GALVANNEAL STEEL  
F-50HZ - 11 GAUGE ALUMINUM
- PINTLE HINGE
- GASKET (ALL AROUND COVER)
- COVER GAUGE  
F-20HZ - 14 GAUGE GALVANNEAL STEEL  
F-50HZ - 11 GAUGE ALUMINUM
- COVER LINER  
F-20HZ - 22 GAUGE GALVANNEAL STEEL  
F-50HZ - 18 GAUGE ALUMINUM
- SPRING LIFTING MECHANISM
- 1" RIGID FIBERBOARD INSULATION
- SLAM LATCH (2 POINT)
- INSIDE AND OUTSIDE HANDLES W/PADLOCK HASPS
- ARM GUIDE BRACKET
- 1" THICK FIBERGLASS COVER INSULATION
- HEAVY DUTY HOLD OPEN ARM W/ RED VINYL GRIP
- NEOPRENE GASKET
- LOCK STRIKE & PADLOCK HASP
- BILCLIP® FLASHING SYSTEM
- GUIDE ARM

### SHOP FINISH:

STEEL: RED OXIDE PRIMER  
ALUMINUM: MILL FINISH  
HARDWARE: ZINC PLATED/CHROMATE SEALED  
(UNLESS OTHERWISE SPECIFIED)

THIS PRODUCT MAY BE INSTALLED ON EITHER A FLAT OR SLOPING ROOF. WHEN INSTALLED ON A SLOPE, THE HINGE SIDE MUST RUN PARALLEL WITH THE SLOPE. IF SLOPE EXCEEDS 30°, ADVISE FACTORY FOR MODIFICATION.

CUSTOMER:

P.O. NO:

JOB:

TAG:

SALES REP:

APPROVED BY:

DATE:

Manufacturers of Doors for Special Services  
**Bilco**® THE BILCO COMPANY  
New Haven, Connecticut 06505

**SINGLE LEAF ROOF SCUTTLE**  
**TYPE F SIZE 4'-0" x 4'-0"**  
WIDTH x LENGTH

QTY	TYPE	METAL
<input type="checkbox"/>	F-20 HZ	STEEL COVER/STEEL FRAME
<input type="checkbox"/>	F-50 HZ	ALUM. COVER/ALUM. FRAME

THIS DRAWING IS THE PROPERTY OF THE BILCO COMPANY AND INCORPORATES INFORMATION WHICH IS PROPRIETARY. PUBLICATION AND/OR PUBLIC DISTRIBUTION IN WHOLE OR IN PART IS EXPRESSLY PROHIBITED WITHOUT THE PRIOR WRITTEN CONSENT OF THE BILCO COMPANY. THE INFORMATION CONTAINED HEREIN REMAINS THE PROPERTY OF THE BILCO COMPANY. ALL RIGHTS RESERVED.